



THE JOINERY COMPANY



MADE BY HAND



THE JOINERY COMPANY



*T*he Joinery Company's Wide Plank Floors and Parquetry are quite simply the finest wood floors you can buy. Whether you choose our 200 year old antique planks or the beautiful wide planks taken from our managed forests, the principles of premium quality, superb craftsmanship, and environmental sensitivity have been faithfully applied.

Floors come standard in 3/4" thickness with a 3, 4 or 5 mm sawn wear layer. They are available as planks or parquetry. A variety of surface and edge treatments are possible with both types of floors, including square edge, brushed, and hand-planed. They can be nailed, glued or floated over radiant heat, concrete, or wooden sub-floors. And, they can be refinished more times than solid wood floors.

The Joinery Company's floors have been chosen for a wide range of applications, ranging from private residences to demanding commercial projects. They have been specified by both technical experts and by those who make their choices based solely on beauty and style. They have liberated the imaginations of those who are dissatisfied with ordinary woods, unhappy with plastic imitations, and unwilling to compromise standards of excellence.

For our friends in the architectural, interior design, and custom building communities, and for people of discriminating tastes everywhere, we are proud to present our unique line of hand-made floors. We believe they are the first line of flooring products truly worthy of the great projects that set the standards of interior design.

When I'm working on a problem,
I never think about beauty.
I think only how to solve the problem.
But when I've finished,
if the solution isn't beautiful,
I know it is wrong.

- R. Buckminster Fuller
Architect



A rustic wooden cabin with a red metal roof, surrounded by dense green foliage and wildflowers. The cabin is made of weathered wood and has a small window. The roof is made of corrugated metal. The surrounding area is overgrown with various plants and flowers, including white daisies and yellow wildflowers. The background is filled with tall trees.

Reclaimed Floors

As urban populations expand, large numbers of abandoned cabins, barns and other old structures become slated for dismantling or demolition. We carefully reclaim the rare and unique materials from these structures and then painstakingly recycle them to create the beautiful resawn planks from which we make our spectacular floors. Through centuries of aging, these materials have developed a patina and unique character that sets them apart from all other woods. Each plank has its own special history and story to tell.



ANTIQUE HEART PINE / PERFECTION QUARTERSAWN





ANTIQUE HEART PINE / CLEAR PLAINSAWN











ANTIQUE WHITE PINE / CHARACTER PLAINSAWN







ANTIQUE WHITE PINE / CHARACTER PLAINSAWN / SKIP PLANED



ANTIQUE WHITE PINE / CHARACTER PLAINSAWN / OLD ORIGINAL FACE













TYPICAL GRAINING

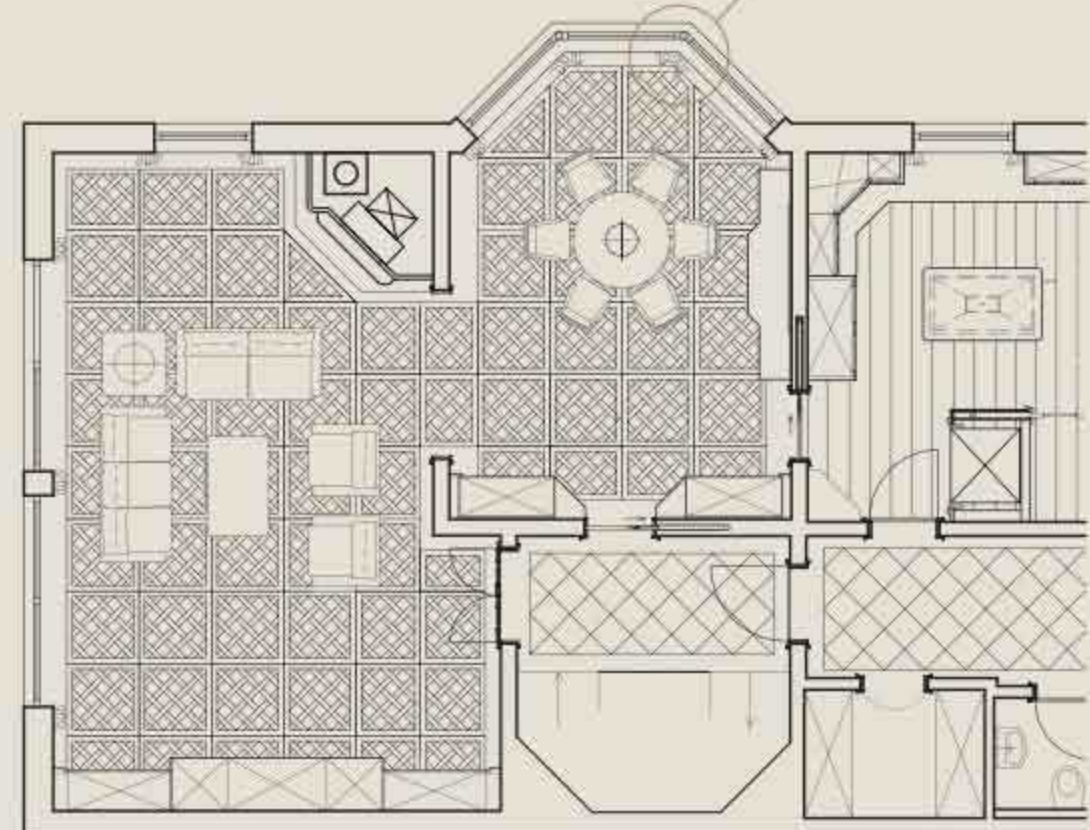








ANTIQUE WHITE OAK / VERSAILLES PARQUETRY





TYPICAL DUTCHMAN

ANTIQUE CHESTNUT / DISTRESSED PLAINSAWN



The background of the entire page is a photograph of a lush forest. In the foreground, there is a dense carpet of bright green ferns. Several large, mature trees with thick, textured bark stand prominently. The forest extends deep into the background, with many more trees visible, creating a sense of a vast, old-growth forest.

Old Growth Hardwoods

The natural conditions that create the magnificent scenery of Appalachia also produce the world's most beautiful Old Growth Hardwoods. These unique hardwoods grow in the region stretching from northern Georgia to western New York and are unique in all the world. Here, at elevations of 1,000 feet and up, nature creates the ideal environments for growing superior quality hardwoods.

The Joinery Company's facility is located in the center of this range, amid several thousand acres of these beautiful Old Growth Hardwoods. All trees are selectively harvested with draft animals so as to minimize damage to the forest environment. After harvesting, each tree is meticulously studied and earmarked for a specific flooring product. Everything is Green!

















NORTHERN HARD MAPLE / CLEAR PLAINSAWN







NORTHERN HARD MAPLE / CLEAR PLAINSAWN / HAND PLANED













APPALACHIAN WALNUT / CLEAR PLAINSAWN







Renewable Pines

Heart Pine and White Pine are by far the most popular types of wide plank floors in America. The high quality planks from which these floors are made are highly sought after but hard to find. By building special relationships with timberland owners, foresters, sawmills, and lumber specialists, Plankmaker is able to maintain sufficient inventory in these special woods to produce most flooring products on demand. Its inventory includes both rough sawn planks and large diameter logs. Materials are available up to 36" wide and up to 40' long.















EASTERN WHITE PINE / SELECT PLAINSAWN











Our Guarantee

All of the methods employed in the development and production of our flooring products are in keeping with our firm commitment to environmental responsibility and living Green. The Joinery Company guarantees all of its products and solemnly promises to replace or repair any problems that ever occur as a result of a manufacturing defect or failure in them for as long as you own your home.

Whether you have purchased your floor in Antique Wood, Old Growth Hardwood, or Old Growth Pine, in Wide Plank or in Parquetry, you can be sure that you have purchased one of the very finest handcrafted floors in the world.

FINE WOOD FLOORS MADE BY HAND



THE JOINERY COMPANY

AVAILABLE THROUGH FINE FLOORING DEALERS NATIONWIDE